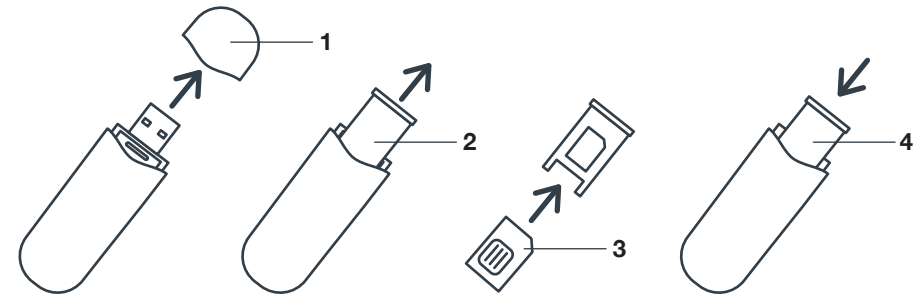


If the indicator light is green, GPS/EDGE is enabled,  
If it is blue, 3G/HSUPA is enabled.

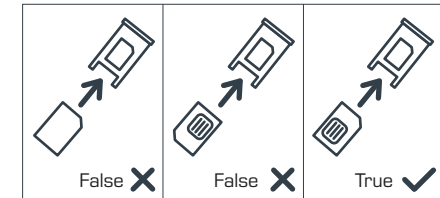
## Technical Specifications

Operating Voltage	5 VDC
Operating Temperature	-10 / +70 °C
Operating Humidity Range	%5 - %95 (non-Condensing)
Product Warranty	2 Years
Current Drawn	500 mA
Dimensions	86.5 x 25.5 x 12.5 mm

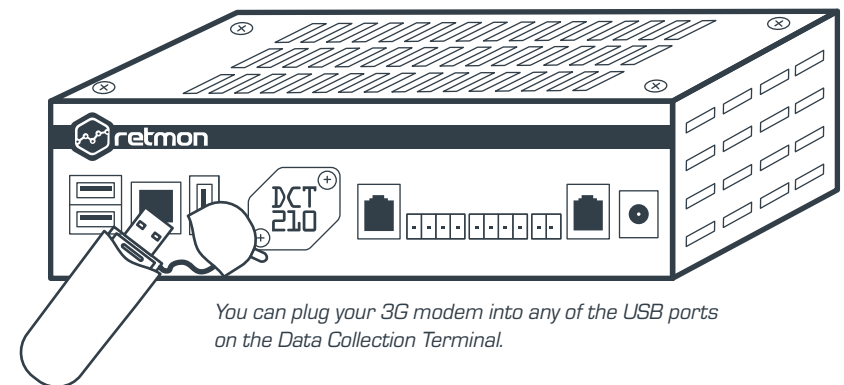
## How to place SIM Card



- 1- Remove the cover of the modem.
- 2- Remove the SIM card slot.
- 3- Insert the SIM card into the slot.
- 4- Put the SIM card slot back in the modem.  
(SIM card facing the modem).



## Modem Connection



You can plug your 3G modem into any of the USB ports on the Data Collection Terminal.